

# chloe

Chloe è una sedia in massello di frassino fasciata da uno schienale avvolgente in compensato curvato rivestito in cuoietto. La sua forma ad arco dà origine a una seduta accogliente. La sua comodità è accentuata dal sedile imbottito, che prolunga il piacere di sedere a tavola. I 3 materiali, legno, cuoietto e tessuto dialogano tra loro permettendo notevoli possibilità di personalizzazione.

Chloe is a chair made of solid ash, wrapped by an enveloping back made of curved plywood covered in thick leather. Its arched shape gives rise to a cozy seat. Its comfort is enhanced by the padded seat, which prolongs the pleasure of sitting at the table. The 3 materials, wood, thick leather and fabric, communicate with each other allowing considerable possibilities for customization.

Struttura in legno massello di frassino tinto in essenza.  
Struttura sedile in legno multistrato con imbottitura in poliuretano e rivestimento in tessuto.  
Struttura schienale in legno multistrato curvato, rivestito in cuoietto P3.

Structure in solid ash wood stained in essence.  
Seat structure in plywood with polyurethane padding and fabric cover.  
Back structure in curved plywood, covered in thick leather P3.



## woods structure

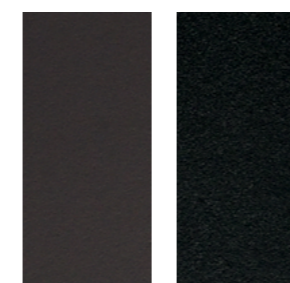


Noce Italiano Biondo    Teak Gold    Noce Canaletto    Rovere thermo

## thick leather CAT.P3 backrest



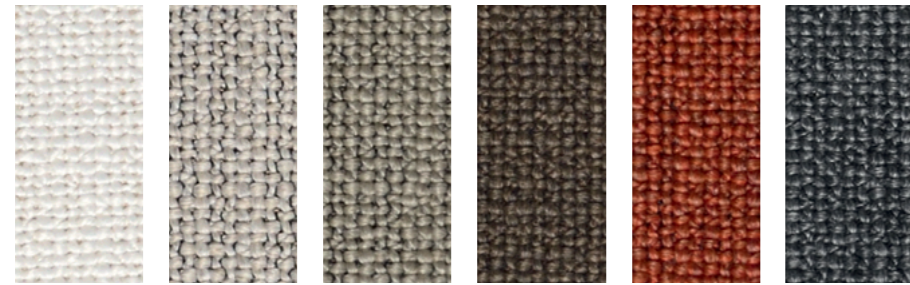
C23 Ghiaccio    C01 Silver    C39 Sella    C29 Taupe    C28 Fango    C31 Tabacco    C18 Grafite    C32 Caffè



C11 Moka    C09 Nero

# fabrics CAT.A TUNDRA

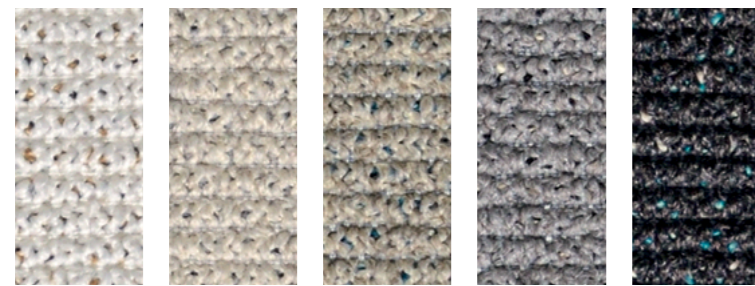
seat



07 03 30 06 09 11

# fabrics CAT.A DUNE

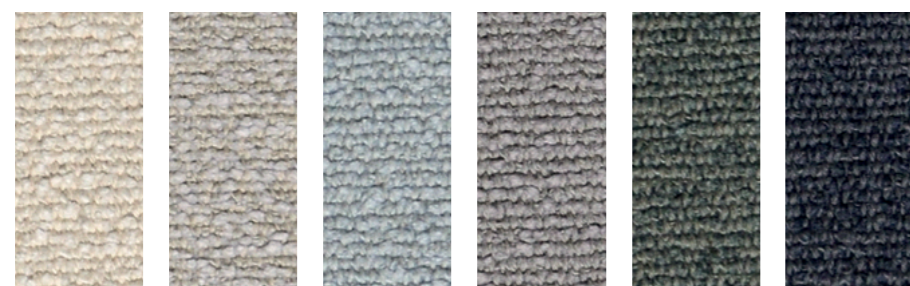
seat



01/1 02 03/11 20 18/2

# fabrics CAT.B+ GOBI

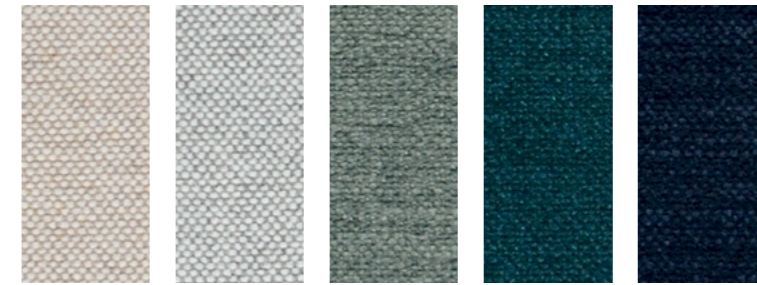
seat



H865 H867 H872 H873 H871 H875

# fabrics CAT.B+ EMYR GRS

seat



14 05/2 34/2 20/1 200

# fabrics CAT.B VALERYE

seat



305 336 341 315 332 329

Dimensions in centrimetres. The company has the right to modify the models without prior notice. The information given here are based on the latest product information available at the time of printing.

Shades of colours shown as samples may vary due to the fact that they appear on paper, it is for this reason that all colours are considered indicative and the company will not be liable for differences should they arise in the final product.