

# sorrento

Il progetto di Sorrento è nato sulla richiesta di un tavolo che rispondesse alla clientela cinese, che tradizionalmente predilige il tavolo rotondo. In particolare, c'era la richiesta di un tavolo di grandi dimensioni per ospitare comodamente 8 commensali. In aggiunta, si chiedeva che avesse un disco girevole al centro che, secondo il costume cinese, permette di attingere ai piatti di portata posti al centro facendolo ruotare.

Si è voluto sottolineare questa funzione creando un contrasto di materiali tra il piano, in legno con venature poste a 4 settori a intarsio, e il disco girevole Lazy-Susy in pietra o marmo.

The project of Sorrento originated from the requirement for a table that would suit Chinese customers, who traditionally prefer round tables. In particular, we had a demand for large tables that could comfortably accommodate 8 diners. In addition, it needed to have a rotating disk in the center which, according to Chinese custom, allows you to draw from the serving plates placed in the center by rotating it.

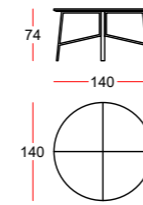
This function was emphasized by creating a contrast of materials between the top, made of wood with veins placed in 4 sections with inlay work, and the Lazy-Susy rotating disk made of stone or marble.

Top in pelle P3, P2, legno o marmo.  
Gambe in metallo verniciato.  
Versione con Lazy Susan solo su misura 180 (opzionale).

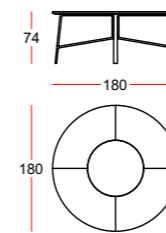
Optional per il tavolo tondo: gambe rivestite in pelle.

Top in leather P3, P2, wood or marble.  
Legs in painted metal.  
Lazy Susan available on the 180 version (optional).

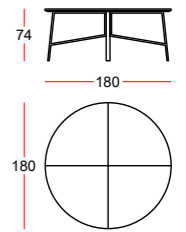
Round table optional: legs in leather.



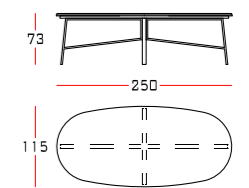
140 round



180 lazy susan



180 round



oval

## metals

### legs



Argento

Bronzo

Blu Ossido

Piombo

# marbles

top



Calacatta Zebrino Bianco Carrara Sahara Noir

# woods

top



Noce Italiano Biondo Teak Gold Noce Canaletto Rovere thermo

# leather CAT.P3 DELTA

top



010 434 015 121 090 051 029 1062

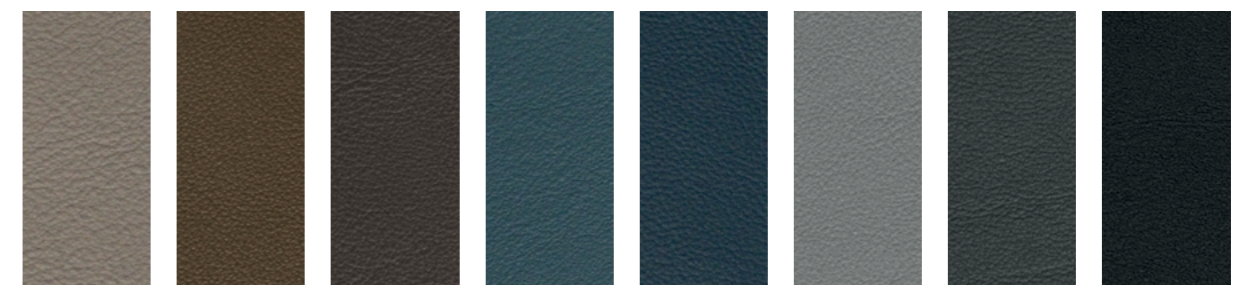
# leather CAT. P2 NUVOLA

top

legs (optional for round table)



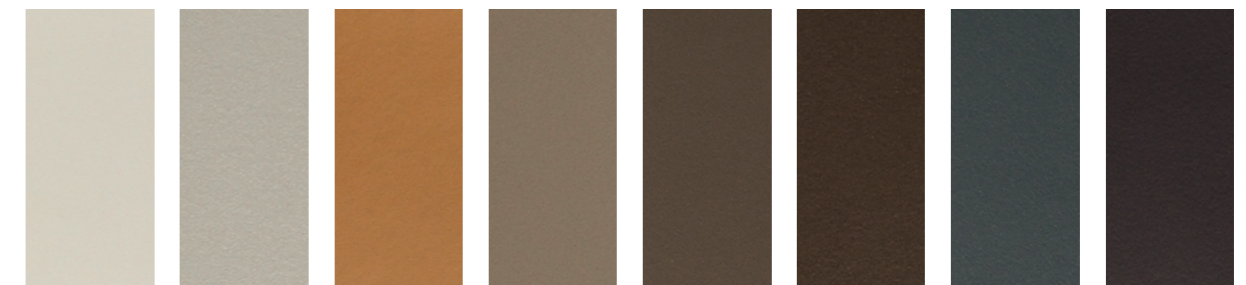
117 Neve 198 Ostrica 199 Canapa 179 Lino 159 Creta 174 Siena 208 Zabaione 131 Cuoio



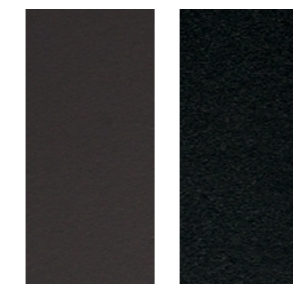
207 Camoscio 217 Fango 147 Moretto 164 Ottanio 154 Zaffiro 203 Elefante 141 Antracite 101 Nero

# thick leather CAT.P3

legs details (optional for round table)



C23 Ghiaccio C01 Silver C39 Sella C29 Taupe C28 Fango C31 Tabacco C18 Grafite C32 Caffè



C11 Moka C09 Nero

Dimensions in centimetres. The company has the right to modify the models without prior notice. The information given here are based on the latest product information available at the time of printing.

Shades of colours shown as samples may vary due to the fact that they appear on paper, it is for this reason that all colours are considered indicative and the company will not be liable for differences should they arise in the final product.