

vinci

La poltroncina Vinci è stata progettata con l'intento di creare una struttura di supporto dentro la quale i cuscini di sedile e schienale fossero semplicemente infilati. Il guscio esterno quindi è indipendente dall'imbottitura: è calzato su un telaio in acciaio che lo solleva da terra, e finito in cuoio cucito lungo tutto il perimetro.

The Vinci armchair was designed with the intention of creating a support structure in which the seat and back cushions were simply tucked in. The outer shell is therefore independent from the padding: it is fitted on a steel frame that lifts it from the ground, and finished in leather sewn around the perimeter.

Struttura in legno multistrato.
 Imbottitura in poliuretano espanso.
 Rivestimento esterno in cuoietto P3, rivestimento cuscini in pelle P3, P2, P1 o tessuto.
 Gambe in metallo verniciato.

Structure in plywood.
 Padding in polyurethane foams.
 Upholstery in thick leather P3 (external part) and leather P3, P2, P1 or fabric (cushions).
 Legs in painted metal.



metals

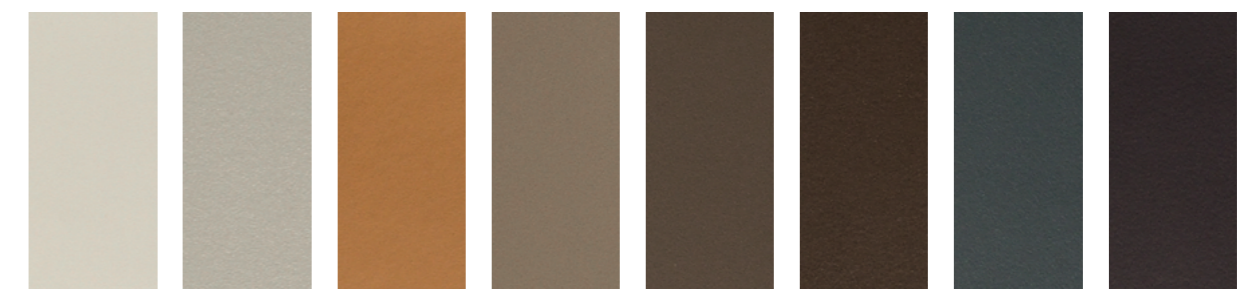
legs



Argento Bronzo Blu Ossido Piombo

thick leather CAT.P3

external part



C23 Ghiaccio C01 Silver C39 Sella C29 Taupe C28 Fango C31 Tabacco C18 Grafite C32 Caffè



C11 Moka C09 Nero

leather CAT. P3 DELTA

seat



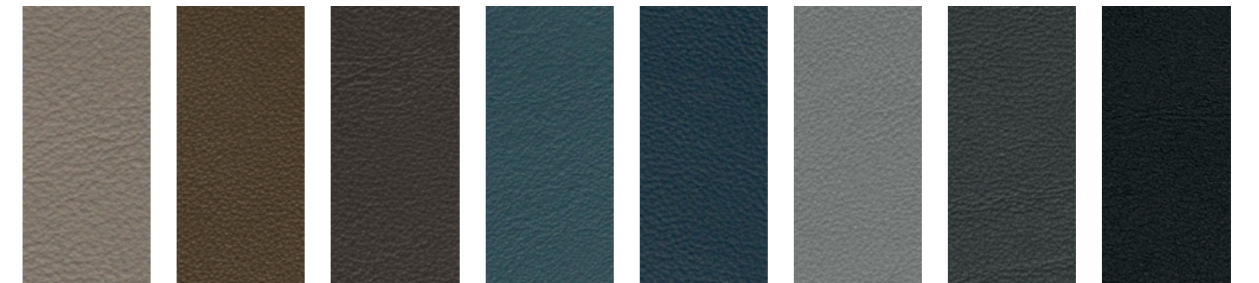
010 434 015 121 090 051 029 1062

leather CAT. P2 NUVOLA

seat



117 Neve 198 Ostrica 199 Canapa 179 Lino 159 Creta 174 Siena 208 Zabaione 131 Cuoio



207 Camoscio 217 Fango 147 Moretto 164 Ottanio 154 Zaffiro 203 Elefante 141 Antracite 101 Nero

leather CAT.P3 SUEDE

seat



110 1050 311 383 810 862

leather CAT.P1 NABUK

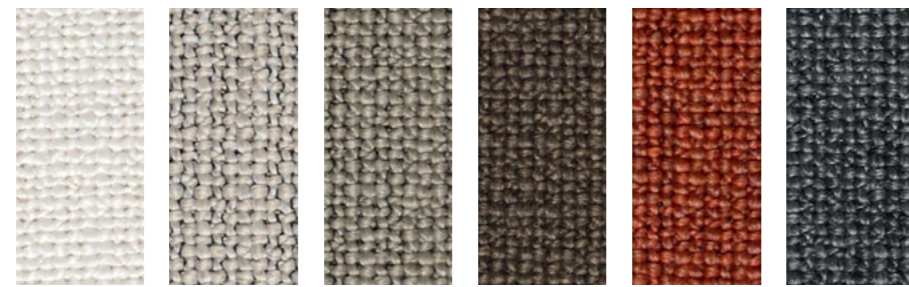
seat



2 Mediterraneo 3 Mediterraneo 23 Mediterraneo 22 Mediterraneo 9 Mediterraneo 11 Mediterraneo 8008 Mediterraneo

fabrics CAT.A TUNDRA

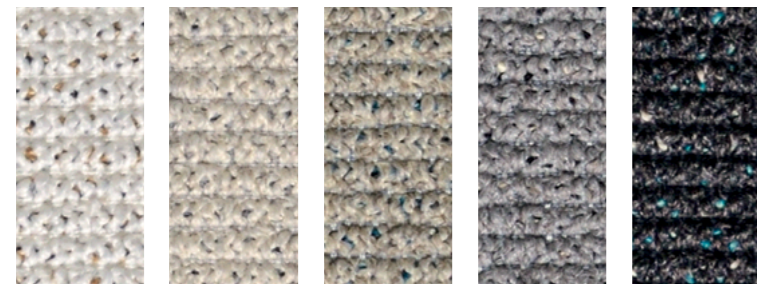
seat



07 03 30 06 09 11

fabrics CAT.A DUNE

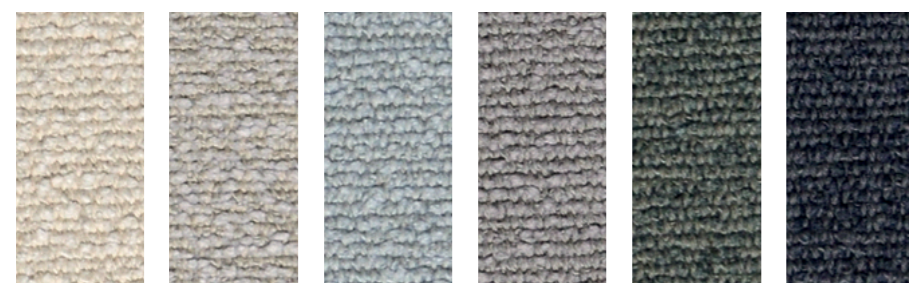
seat



01/1 02 03/11 20 18/2

fabrics CAT.B+ GOBI

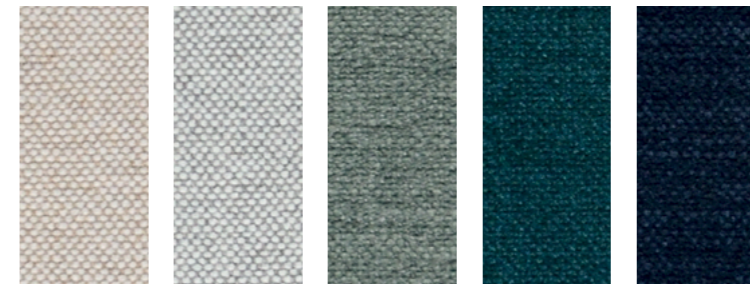
seat



H865 H867 H872 H873 H871 H875

fabrics CAT.B+ EMYR GRS

seat



14 05/2 34/2 20/1 200

fabrics CAT.B VALERYE

seat



305 336 341 315 332 329

Dimensions in centrimetres. The company has the right to modify the models without prior notice. The information given here are based on the latest product information available at the time of printing.

Shades of colours shown as samples may vary due to the fact that they appear on paper, it is for this reason that all colours are considered indicative and the company will not be liable for differences should they arise in the final product.