

# mistral

Mistral nasce su una suggestione molto particolare: il fascino della simbiosi naturale tra uomo e animale che ha da sempre connotato la vita della gente a cavallo, mandriani o cow-boys, ma più precisamente agli esempi europei del Mediterraneo, come i butteri della Maremma o i gardian della Camargue. Le curve della sella sono quelle che disegnano lo schienale in cuoio, contro il quale si appoggiano i cuscini. Elementi essenziali, semplici. Forme ridotte al minimo.

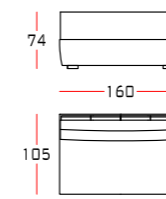
La forma ad arco della versione "Curve" è caratterizzata da punti di differente profondità della seduta. Mistral ricorda il vento del mediterraneo, che attraversa le regioni costiere affacciate sul Mediterraneo settentrionale, e i pascoli in cui butteri e gardien in sella sorvegliano le mandrie.

Struttura in legno multistrato e massello con molleggio seduta su cinghie elastiche. Imbottitura con poliuretano espanso a quote differenziate. Rivestimenti cuscini in tessuto o pelle. Schienale rivestito in cuoio P1 o cuoietto P3.

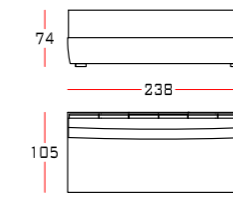
Mistral was born on a very particular suggestion: the charm of the natural symbiosis between man and animal that has always characterized the life of people on horseback, herdsmen or cow-boys, but more precisely to the European examples of the Mediterranean, like the butteri of the Maremma or the gardian of the Camargue. The curves of the saddle are those that draw the leather back, against which the cushions rest. Essential, simple elements. Forms reduced to a minimum.

The arched shape of the "Curve" version is characterized by points of different depth of the seat. Mistral is reminiscent of the Mediterranean wind, which crosses the coastal regions overlooking the northern Mediterranean, and the pastures where butteri and gardien in the saddle guard the herds.

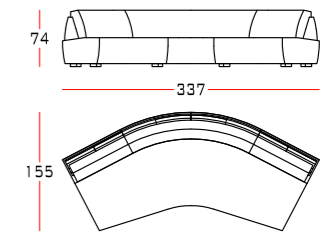
Structure in solid wood and plywood with suspension seat on elastic belts. Padding with polyurethane foams with different densities. Cushion upholstery in fabric or leather. Backrest covered in cowhide P1 or thick leather P3.



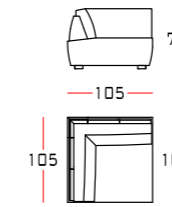
2P



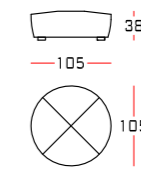
3P



CURVE

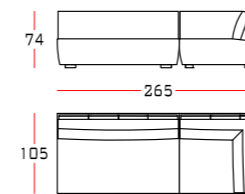


ANG

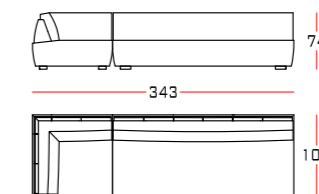


POUF

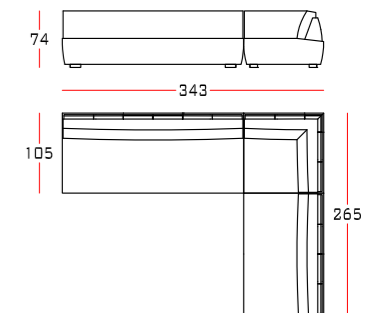
## compositions



2 P+ANG



3 P+ANG



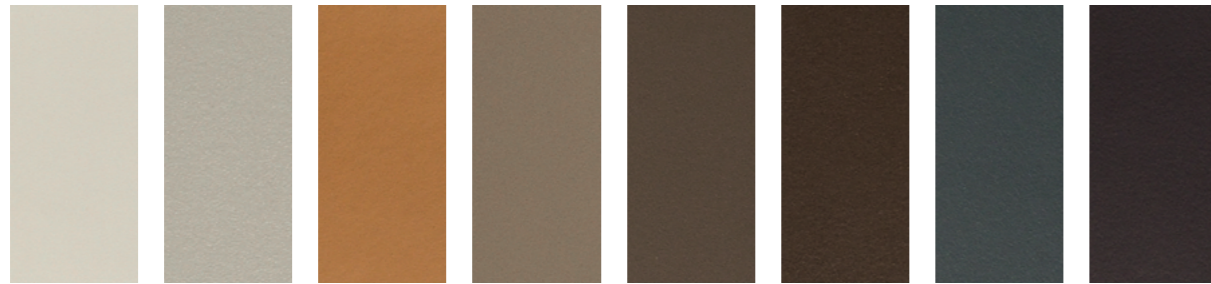
3 P+2 P+ANG



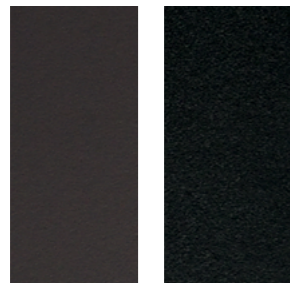
**NOTE**  
 2/3 P= 2/3 posti | seats  
 POUF= pouf  
 ANG= angolare | corner seat  
 CURVE= curvo | curve

# thick leather CAT.P3

backrest



C23 Ghiaccio C01 Silver C39 Sella C29 Taupe C28 Fango C31 Tabacco C18 Grafite C32 Caffè



C11 Moka C09 Nero

# cowhide CAT.P1

backrest



Naturale Cuoio Foresta

# leather CAT. P3 DELTA

cushions



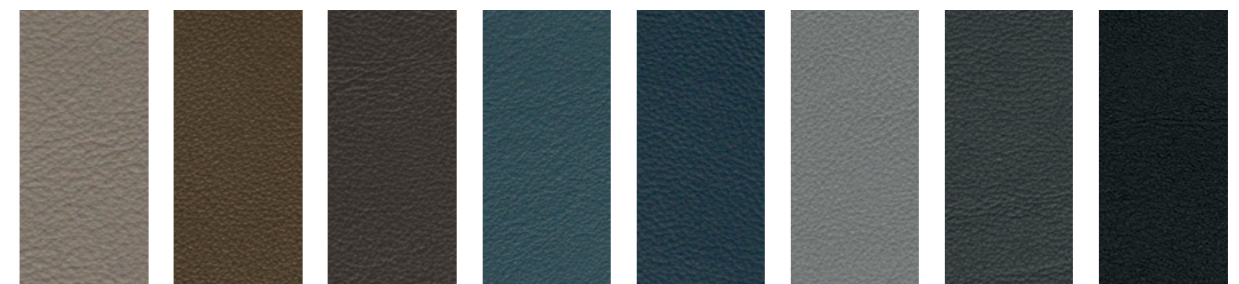
010 434 015 121 090 051 029 1062

# leather CAT. P2 NUVOLA

cushions



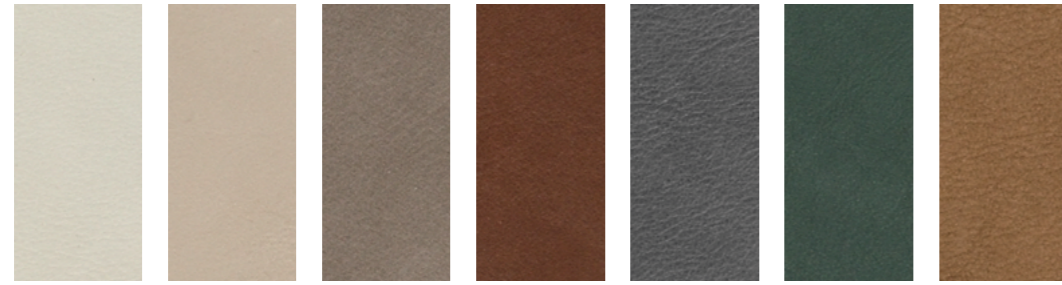
117 Neve 198 Ostrica 199 Canapa 179 Lino 159 Creta 174 Siena 208 Zabaione 131 Cuoio



207 Camoscio 217 Fango 147 Moretto 164 Ottanio 154 Zaffiro 203 Elefante 141 Antracite 101 Nero

# leather CAT.P1 NABUK

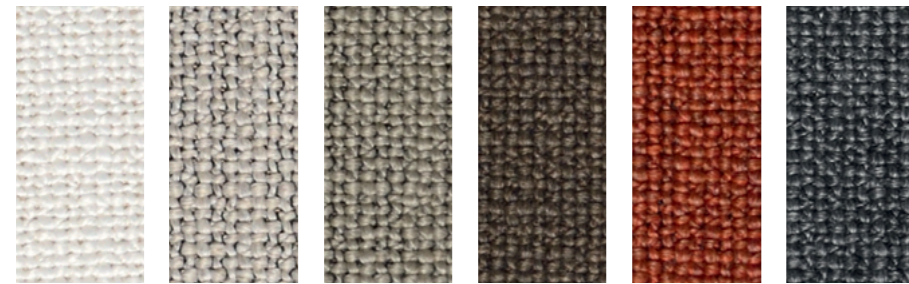
cushions



2 Mediterraneo 3 Mediterraneo 23 Mediterraneo 22 Mediterraneo 9 Mediterraneo 11 Mediterraneo 8008 Mediterraneo

# fabrics CAT.A TUNDRA

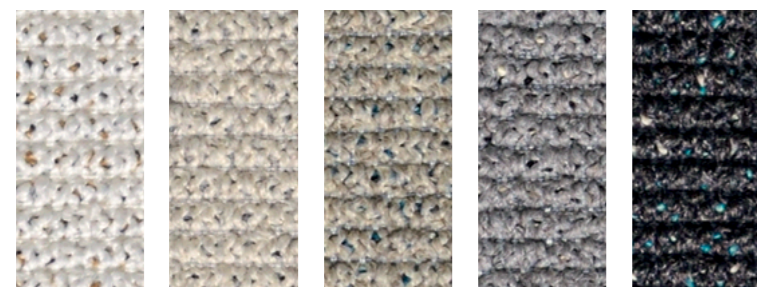
cushions



07 03 30 06 09 11

# fabrics CAT.A DUNE

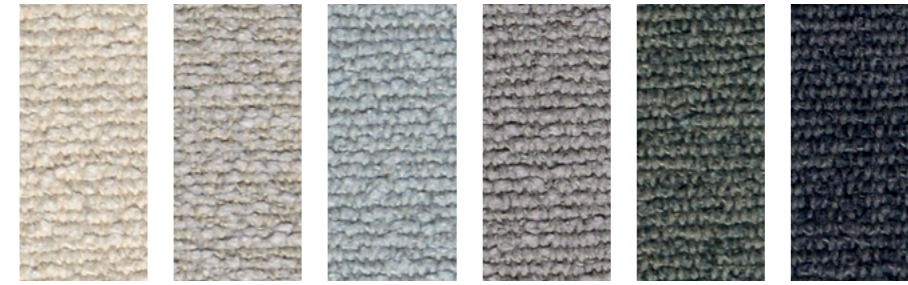
cushions



01/1 02 03/11 20 18/2

# fabrics CAT.B+ GOBI

cushions



H865 H867 H872 H873 H871 H875

# fabrics CAT.B+ EMYR GRS

cushions



14 05/2 34/2 20/1 200

# fabrics CAT.B VALERYE

cushions



305 336 341 315 332 329

# woods

## structure



Noce Italiano  
Biondo

Teak Gold

Noce Canaletto

Rovere thermo

Dimensions in centrimetres. The company has the right to modify the models without prior notice. The information given here are based on the latest product information available at the time of printing.

Shades of colours shown as samples may vary due to the fact that they appear on paper, it is for this reason that all colours are considered indicative and the company will not be liable for differences should they arise in the final product.